

MIDWAY CITY SANITARY DISTRICT

COMMERCIAL

SOLID WASTE AND RECYCLING DESIGN AND CONSTRUCTION STANDARDS

<u>Sections:</u>	<u>Page</u>
Applicability	1-2
Definitions.	2-3
General construction and design standards.	4-9
Multifamily requirements.	9-10
Compactors.	10-11
Roll-off boxes.	11
Storm water pollution prevention.	12
Permits.	12
Exceptions.	12
Summary of AB341 and AB1826	13
Standard Bin Enclosure Plans A, B & C	Attached

Applicability.

- A. The requirements of this chapter shall apply to all building or development permits for:
1. New commercial development projects.
 2. New multifamily development projects with five (5) units or more that will utilize shared waste and recycling enclosures.
 3. A physical change or operational change that exceeds a cost of \$75,000 for improvements to the commercial property and/or business.
 4. Commercial development projects that trigger a planning entitlement (such as a site development review or conditional use permit) and consist of uses including but not limited to grocery stores, restaurants, markets, auto repair/use and daycares that generate food waste, grease and/or vehicle fluids, and packaging material in addition to uses that have the potential to pollute storm water as determined by the local Building Official.

5. Any other project, including but not limited to tenant improvements, where the Midway City Sanitary District concludes that the use has the potential to discharge pollution into the city's storm sewer system. When this chapter applies to a tenant improvement, the property owner or applicant shall be responsible for making improvements only to the solid waste and recycling enclosure used by the tenant.

Definitions.

The terms used in this chapter have the meanings set forth below:

"Collection" means the removal and transportation of solid waste, recycling and organics by the collector from the place of delivery to the Material Recovery Facility (MRF) under the exclusive franchise agreement with the Midway City Sanitary District.

"Collector" means that person or business having an exclusive franchise agreement with the Midway City Sanitary District granting to him/her or it the exclusive privilege of collecting or causing to be collected or transported for a fee any solid waste within the Midway City Sanitary District's jurisdiction or any portion thereof.

"Commercial development" means construction of buildings consisting of retail, professional, wholesale, or industrial facilities.

"Compactor" means any roll-off container or bin which has a compaction mechanism, whether stationary or mobile.

"Discharge" means (A) any addition of any pollutant that has potential to enter navigable waters from any point source or (B) any addition of any pollutant to the waters of the contiguous zone or the ocean from any point source other than a vessel or other floating craft.

"Food service establishments" include restaurants, markets, bakeries, grocery stores and all other establishments that prepare and/or serve fresh food on the premises.

"Illicit discharge" means any discharge to the city storm sewer system that is not composed entirely of stormwater, except discharges pursuant to a NPDES permit and discharges resulting from firefighting activities.

"Mixed recycling" consists of any clean, dry paper, plastic and glass (bottles, jars and jugs only), and metal cans (tin and aluminum) placed in a single container. Note: cardboard is also accepted in mixed recycling bins

and carts; however, recycling boxes in the carts is often impractical due to the limited capacity and tendency for even flattened boxes to get jammed in the carts.

“National Pollutant Discharge Elimination System (NPDES)” means a national program under Section 402 of the Clean Water Act for regulation of discharges of pollutants from point sources to waters of the United States. Discharges are illegal unless authorized by a NPDES permit.

“Organics” means all types of green waste including grass and weed clippings, shrub and tree prunings, branches (less than four (4) feet in length and four (4) inches in diameter), leaves, plants, flowers, food scraps and food-soiled paper products.

“Owner” means the owner or owners of real property having fee title to the property as identified in the most recent equalized assessment roll of the Orange County Assessor.

“Point source pollution” means a single identifiable localized source of air, water, thermal, noise or light pollution. A point source has negligible extent, distinguishing it from other pollution sources.

“Pollutant” means dredged soil, solid waste, incinerator residue, sewage, sewage sludge, munitions, chemical wastes, biological materials, radioactive materials, heat, wrecked or discarded equipment, rock, sand, dirt and industrial, municipal and agricultural waste discharge into water.

“Building Official” means the city of Westminster Building Official or his or her designee.

“Recyclable materials,” for the purpose of this document, means all items accepted in the Midway City Sanitary District’s commercial recycling program, including mixed recycling (paper, bottles and cans), cardboard and food waste/organics.

“Recycling” means processing recovered used resources (waste) into new products to prevent waste of potentially useful resources, reduce the consumption of virgin materials, reduce energy usage, reduce greenhouse gas emissions and water pollution (from landfilling), by reducing the need for solid waste disposal.

“Roll-off container” means a metal container that is normally loaded onto a motor vehicle and transported to the Material Recovery facility (MRF).

“Solid waste” means all putrescible and nonputrescible solid waste (garbage), including paper, ashes, industrial or commercial wastes, demolition and construction wastes, discarded home and industrial appliances, animal

solid and semi-solid wastes other than fecal matter, vegetable wastes, and other discarded solid and semi-solid wastes, but does not include hazardous waste, as herein defined, sewage, or abandoned automobiles.

“Storm water” means storm water runoff, snow melt runoff, surface runoff and drainage.

“Tenant” means any person or persons other than the owner occupying or in possession of the residence or commercial space.

General construction and design standards.

The location, design and construction of enclosures for the set out and collection of garbage, recyclables, food waste, landscaping debris or other discarded materials shall conform to all applicable regulations. A development may have multiple solid waste and recycling enclosures to meet the required amount of capacity. The Midway City Sanitary District shall review the design of all enclosures.

Standard enclosures shall have a minimum inside usable floor and wall dimension of eleven (11) feet wide by ten (10) feet deep, to allow tenant and collector access to the bins/carts and placement of bins sideways in the enclosure if necessary. In some instances, the required enclosure size may be greater than eleven (11) feet by ten (10) feet.

All commercial uses within the Midway City Sanitary District’s jurisdiction must at a minimum provide adequate space for separate garbage bins, cardboard-only bins and mixed recycling bins. In addition, food service establishments shall provide adequate space for food waste/organics. If a food establishment will generate grease, fat or tallow, adequate space for those containers is also required. The types and size of bins shall be based on the volume of tonnage generated by the development activity, as estimated by the Midway City Sanitary District, and with the aim of reducing, as much as possible, the number of service trips per week by the collector.

A. Height Clearance of the Enclosure Approach. The entire approach to and from the front of the enclosure shall have at least eighteen (18) feet of vertical clearance to accommodate refuse truck height. The area immediately in front of the enclosure itself, or the location where the bin will be serviced, shall have at least thirty-two (32) feet of vertical clearance to accommodate the servicing of the bin.

All projects shall provide clearance for front end loading vehicles, as defined below:

Vertical (approach and exit)	18 feet high
Vertical (when dumping bin)	32 feet high
Lateral	15 feet wide

B. Driveways. An asphalt or concrete driveway with fifty (50) feet of straight, direct access that leads to and from the enclosures to the bin is required and shall be built to withstand trucks weighing up to sixty-two thousand (62,000) pounds gross vehicle weight (GVW). The driveway shall be built in accordance with the city standard plans and specifications.

C. Concrete Apron at the Approach.

1. The apron surface shall be the same elevation as the enclosure pad threshold and the surrounding surfaces, with a minimum slope of one-eighth (1/8) inch (one percent (1%) grade) per foot away from the enclosure pad so as to direct runoff away from the enclosure.

2. The apron shall extend ten (10) feet from the enclosure pad and be the width of the enclosure opening. To prevent damage to the asphalt paving caused by receptacle impact, the enclosure base shall be designed to withstand up to twenty thousand (20,000) pounds of direct force from a single truck axle. A sufficient strength concrete shall be used to prevent chipping.

D. Concrete Enclosure Pad.

1. The enclosure pad shall be engineered to withstand up to twenty thousand (20,000) pounds of direct force from a single truck axle for any portion of the pad that is subject to vehicle traffic.

2. The enclosure pad surface shall be the same elevation as the apron threshold.

3. On the open side of the enclosure, a grade break line shall be constructed at the inside edge of the wall with the slab sloping inwards on the inside of the structure and away from the structure on the outside.

4. The ground on all other sides of the structure shall be sloped away from the structure.

E. Enclosure Design. Enclosures shall be designed to provide adequate space for collecting and storing solid waste and recyclable materials, including mixed recycling, separated cardboard and food waste/organics (when appropriate). All solid waste and recycling enclosures shall be designed to provide for adequate capacity, based on the volume and tonnage generated by the development activity, as estimated by the Midway City Sanitary District, and with the aim of reducing, as much as possible, the number of service trips per week by the collector.

1. Material. The design of the enclosure shall incorporate the same materials used for the primary buildings for a coordinated look and feel to the development.

2. Landscaping. In instances where the enclosure is visible from roadways or other public spaces, an irrigated five (5) foot wide landscape strip running the length of the three (3) nongated enclosure walls shall be provided to allow for vines or large shrubs to shield the walls and discourage graffiti.
3. Height of Walls. All enclosures shall have walls with a minimum height of six (6) feet.
4. Roof. All solid waste and recycling area enclosures with a drain that are not located inside a building shall have roofs to prevent contaminants from washing into the storm drain system. The lowest part of the ceiling cannot be lower than nine (9) feet high. The roof shall extend past any open sides. Additionally, the roof shall not overhang the front gate so that the garbage trucks can access the bins. All gates must have a pin at the bottom of the gate to keep gate from swinging open when gate is shut or swinging closed in the open position.
5. Inside Dimension.
 - a. All enclosures must have sufficient space for at least one (1) bin for solid waste, a second bin of at least equal size for storing and collecting separated cardboard, and either a mixed recycling bin or cart for mixed paper, bottles and cans of sufficient size to collect mixed recycling items generated on site. Enclosures that will be used by food establishments must also allow space for a separate food waste/organics bin of sufficient size to collect food waste generated on site.
 - b. The required interior dimensions shall not include space required for protective curbs or bumpers and shall allow for pairing of trash and recycling container(s) in the same enclosure. All bins must be configured inside the enclosure so as to ensure full access to the entire front area of the bin.
 - c. If the enclosure will service food service establishments, adequate space must also be provided for waste cooking oil storage containers, which must be placed so that they will not interfere with the collector's ability to service the enclosure, either by blocking access or as a result of leaking oil that creates a hazard for drivers.
 - d. The enclosure shall be large enough to provide a minimum of twelve (12) inches on each side of the bins, twenty-eight (28) inches between bins placed side by side and twenty-four (24) inches from the front of the bin to the gate. If bins are placed facing each other, a minimum of twenty-eight (28) inches between bins is required. A protective buffer (cement curb, bollards or wood/rubber bumper) is required around all interior walls, including partial walls on the gated side, to prevent damage to the enclosure during servicing. Enclosure dimensions will increase depending on the size and number of required bins, which are dependent upon the use. Multiple enclosures may also be required, depending on the size of the development and type(s) of use. If there are multiple enclosures required, each enclosure shall have enough space to pair trash and recycling

containers in the same enclosure, to ensure optimum diversion and to minimize contamination of recycling loads. All enclosures shall conform to the standards listed above.

6. Recycling-Only Enclosures. Smaller "recycling-only" enclosures may be allowed in certain cases where an existing site has adequate enclosure space for trash, but it is not possible to locate the required recycling containers within the trash enclosure, based on the Midway City Sanitary District's estimate of required volume. Drainage requirements for recycling-only enclosures will depend on the types of materials stored for recycling. Recycling-only enclosures designated for separated nonputrescible waste (i.e., cardboard-only or mixed recycling bins or carts) shall be subject to a site development review permit.

7. Gates and Pedestrian Doors.

- a. Double gates are required for enclosures that contain two (2) or more trash or recycling bins.
 - b. Gates shall be free hanging with no center pole. The gates/doors shall be designed to ensure access and removal of each bin from the enclosure without having to move another bin.
 - c. Gates shall be solid metal painted to incorporate the overall design theme of the development with outside handles on each door and a slide latch to secure the doors. The solid waste and recycling area should not be visible through the gates. In addition, gates must be approximately the same size as the enclosure walls.
 - d. The gated opening shall be a minimum of thirteen (13) feet wide. Gate posts shall be placed outside this span.
 - e. Bolts shall be used to secure the gate to the poles or walls.
 - f. The gate doors must be constructed with a mechanism that will provide a means of securing the gate doors in both an opened and closed position. All gates must be lockable using a standard padlock.
 - g. A pedestrian entrance shall be provided for all enclosures. All pedestrian doors shall open outward to avoid interfering with placement of, and access to, containers.
 - h. An accessible path of travel shall be provided from the main building to the pedestrian entrance door described above.
8. Lighting. The area around and inside the enclosure must be lit with a minimum of one (1) foot-candle. A motion sensor is required.

9. Storage inside the Enclosure—Maintenance.

- a. The enclosure is for the storage of solid waste, mixed recycling, cardboard, organics and grease containers only.
- b. Enclosures shall be kept clean, with all recyclables and garbage to be placed in the proper receptacle. No trash or recyclables may be stored on the enclosure floor on either a temporary or permanent basis. Storage of hazardous materials is not allowed in the enclosure.
- c. All solid waste, mixed recycling, cardboard, organics and grease containers are required to have lids that must be closed when not in use to contain litter and to prevent odor, pests and possible storm water pollution. In addition, all waste cooking oil storage containers must be leak proof and/or have secondary containment that does not interfere with access to cooking oil, trash or recycling containers. In addition, the waste oil hauler or property manager shall keep a supply on hand of material designed to absorb oil near the container in case there is a spill.

10. Waste Water Pollution Prevention.

- a. Solid waste and recycling enclosures, with the exception of industrial uses, shall have a drain connected to the sanitary sewer. A hose bib shall be available for periodic wash down must be located outside within 10 feet of bin enclosure.
- b. The applicant must contact the Midway City Sanitary District (MCSD) for specific sanitary sewer connection and discharge requirements. Sanitary sewer connections and inclusion of a grease or sand/oil interceptor shall be in accordance with MCSD standard specifications.
- c. In accordance with MCSD discharge regulations, solid waste and recycling enclosures servicing industrial uses are prohibited from draining into the sanitary sewer system. Waste generated from these uses shall be directly taken to the appropriate waste facility.
- d. Storm water is prohibited from entering the sanitary sewer system; therefore, all solid waste and recycling enclosures that are connected to the sanitary sewer system shall have a roof to prevent storm water from entering the sanitary system. Grading around the solid waste and recycling enclosure shall be designed to drain storm water away from the enclosure.

F. Enclosure Location and Accessibility.

1. All solid waste, recycling and organics receptacles shall be placed so as to be readily accessible for removal and emptying by the collector, but they shall not be placed within the vehicle traveled portion of any street, road, avenue, way or alley, or at any location so as to constitute a nuisance.
2. All bins/enclosures are required to have direct access for collection trucks during normal solid waste, recycling and organics collection days and hours. Direct access means the collection truck can directly access the bin, and insert the forks into the sides of the bin without the driver having to get out of the truck to move the bin. A minimum straight approach of fifty (50) feet is necessary to line up directly with the bin.
3. Provide a turnaround or separate exit that allows the truck to move forward rather than backwards. Maximum back-up distance is fifty (50) feet (unless a greater distance is approved by the franchise hauler) for any maneuver and shall be in a straight line.
4. Solid waste and recycling enclosures shall not be placed in front of fire hydrants and no enclosure shall be placed within five (5) feet of a combustible building wall, opening, or combustible roof eave line.
5. Solid waste and recycling enclosures shall not be installed behind parking spaces except for instances with unusual site constraints.
6. For safety reasons, the turning radius shall be adequate for a three (3) axle truck and shall have a minimum outside turning radius of forty-five (45) feet. A turnaround must be provided for any street, driveway or travel aisle that would otherwise require the collection truck to back up a distance greater than one hundred fifty (150) feet.
7. Truck Specifications.
 - a. Front end loader vehicles need a minimum of fifty (50) feet of unobstructed clearance to access the solid waste and recycling enclosure. Commercial collection vehicles access the solid waste and recycling enclosure at the front of the vehicle.
 - b. Vehicles servicing roll-off containers need a minimum of one hundred thirty-two (132) feet to approach and load the container, and thirty (30) feet of overhead clearance. Roll-off containers are twenty (20) feet in length and eight (8) feet wide. The weight of a roll-off container cannot exceed ten (10) tons when full.
 - c. Existing Development. If an existing development does not have an existing trash enclosure, the development may be required to install a trash enclosure that meets the requirements of this section.

Multifamily requirements.

A. Multifamily complex enclosures in the cities of Westminster and Midway are required to contain space for separate collection of solid waste, mixed recycling and organics as shown in the table below. Front loader bins shall be used to collect mixed recycling, so that the large quantities of cardboard typically generated at multifamily complexes can be easily recycled by residents.

B. Solid waste and recycling enclosures for collection of solid waste, recyclables and organics at multifamily apartment and condominium housing shall observe the requirements of the California Building Code and the requirements of CCR Title 24, regarding accessibility to solid waste and recycling collection containers for persons with disabilities (CCR Title 24, Part 2).

C. Minimum requirements for an enclosure or multiple enclosures by dwelling units are as follows:

LAND USE	MINIMUM SPACE REQUIRED	INTENDED USE FOR THIS SPACE
Multi-Family, Office and General Commercial	138"x 96" or 198"x 66" space for first 20,000 gross building square feet; additional 99"x 66" space for the next 20,000 gross building square feet; or two 288" x 120" spaces	12 Units (1-3yard 2x per week) 18 units (2-3 yard 2x per week) 24 units (3-3 yard 2x per week) Or ½ yard per unit per week Two side-by-side 3 cubic yard bins for first increment of 20,000 gross building square footage, one additional 3 cubic yard bin for trash for each additional increment; or space for collection of trash with 40 cubic yard bin(s)
Retail	138"x 96" or 198"x 66" space for each 8,000 gross building square feet or one space of 288" x 120" and another 99" x 66" for each 8,000 gross building square feet.	Two side-by-side 3 cubic yard bins (for trash) for each increment of 8,000 gross building square feet or one 40 cubic yard bin
Industrial	138"x 96" or 198"x 66" space for first 20,000 gross building square feet and 99" x 66"for each additional 10,000 gross building square feet or one space of 288" x 120" and another 99" x 66".	Two side-by-side 3 cubic yard bins (for trash) for first increment of 20,000 gross building square footage and one 3 cubic yard bin for each additional increment, or one 40 cubic yard bin (for trash)
Institutional (schools, hospitals, cemeteries, military bases, religious institutions, etc.)	Varies by building use rather than land use	Sufficient space for separate collection of trash

Compactors.

- A. Compactors are generally not permitted unless preapproved by the Midway City Sanitary District. Inclusion of a compactor shall not supplant the requirement that a site provide adequate enclosure space for recycling. If a compactor is installed, space for recycling (including organics if applicable) shall be provided in accordance with the requirements discussed above.
- B. Compactors may require additional space and electrical connections, as well as separate building permits.
- C. Compactors are required to be covered and shall include plumbing to capture possible leaks and spills.
- D. Compactors containing solid waste must be serviced at least once per week. The applicant must provide written confirmation from the collector that servicing of the compactor is feasible.
- E. In order to allow adequate space to hook and unhook the compactor from the roll-off truck, a backup distance of three (3) times the length of the thirty-five (35) foot truck is required (minimum one hundred five (105) feet). This distance must extend straight ahead from the end of the compactor. For safety reasons, a site plan requiring a backup distance less than one hundred five (105) feet to service the compactor will not be approved. Width must be at least twelve (12) feet to allow room to maneuver and to provide clearance from objects/structures/vehicles on either side of the backup length. Immediate approach (minimum thirty (30) feet) to a compactor or roll-off box should be on a flat, level surface. Adequate room for backing up and turning shall be provided on site, and shall not require use of the public right-of-way.

Roll-off boxes.

- A. Roll-off boxes for ongoing uses are generally not permitted.
- B. Roll-off containers shall be placed directly behind a building where space is available at a loading dock to allow loading from above.
- C. Roll-off containers shall be placed on a level surface, unless roll-away protection is required. Placement of roll-off boxes shall be subject to approval by the Midway City Sanitary District and/or Franchisee.
- D. Loading docks shall be equipped with bumper pads or eight (8) inch high curbs to avoid undue dock damage from heavy containers.
- E. All projects shall provide clearance for roll-off vehicles as follows:

1. Vertical (approach and exit): fourteen (14) feet high;
2. Vertical (rails raised with bin): twenty-five (25) feet high;
3. Lateral: ten (10) feet wide;
4. Service area length minimum: seventy-five (75) feet long.

Storm water pollution prevention.

- A. All properties shall comply with the federal Clean Water Act.
- B. Solid waste and recycling enclosures within the city that are subject to these standards must have a roof to comply with the city of Westminster or the County of Orange National Pollution Discharge Elimination System (NPDES) storm water permit depending on jurisdictional boundaries.
- C. Provide a 3" minimum drain line inside the enclosure routed to the sanitary sewer; with a trap-type catch basin or a cleanout to grade in combination with a p-trap.

Permits.

All necessary permits shall be obtained prior to the construction of any enclosures within the cities of Westminster or Midway City.

Exceptions.

Applicants that believe they need a smaller enclosure than required in the Midway City Sanitary District's enclosure design standards may request an exception from the Midway City Sanitary District.

The Midway City Sanitary District, General Manager or his or her designee shall have the authority to grant exceptions to the requirements of this chapter including, but not limited to, the requirement to connect to the sanitary sewer, and the location, design and construction requirements. The General Manager or his or her designee shall review the requests for exceptions on a case-by-case basis. In instances where the General Manager or designee waives the requirement to connect to the sanitary sewer, alternative options may be required, including but not limited to the installation of filters in the storm drain inlets at the determination of the local Building Official.

AB 341, Chesbro. 75% recycling goal

AB 341 requires the Department of Resources Recycling and Recovery to increase the diversion of solid waste from the currently required level of 50 percent to 75 percent by 2020. The bill requires certain businesses to arrange for recycling services and requires local governments to implement a commercial recycling program. The bill also makes a number of technical and procedural changes to the laws governing solid waste facility regulation.

AB 1826, Chesbro. Solid waste: organic waste.

(1) The California Integrated Waste Management Act of 1989, which is administered by the Department of Resources Recycling and Recovery, establishes an integrated waste management program that requires each county and city and county to prepare and submit to the department a countywide integrated waste management plan. The act requires a business, which is defined as a commercial or public entity, that generates more than 4 cubic yards of commercial solid waste per week or is a multifamily residential dwelling of 5 units or more, to arrange for recycling services. Existing law also requires jurisdictions to implement a commercial solid waste recycling program meeting specified elements.

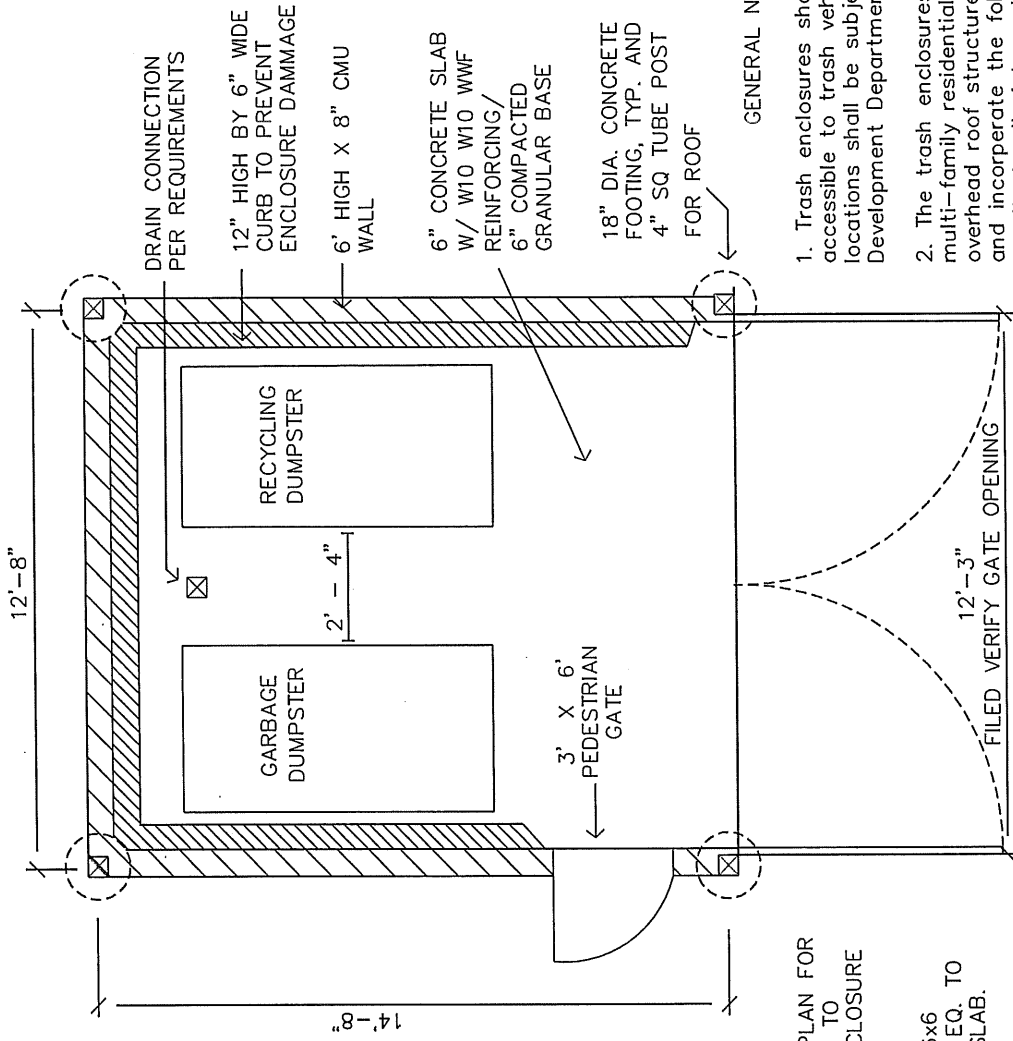
This bill would, commencing April 1, 2016, require a business that generates a specified amount of organic waste per week to arrange for recycling services for that organic waste in a specified manner. The bill would decrease the amount of organic waste under which a business would be subject to those requirements from 8 cubic yards or more to 4 cubic yards or more on January 1, 2017. The bill would also require a business that generates 4 cubic yards or more of commercial solid waste per week, on and after January 1, 2019, to arrange for organic waste recycling services and, if the department makes a specified determination, would decrease that amount to 2 cubic yards, on or after January 1, 2020.

This bill would require the contract or work agreement between a business and a gardening or landscaping service to require the organic waste generated by those services to comply with the requirements of this act.

This bill would require each jurisdiction, on and after January 1, 2016, to implement an organic waste recycling program to divert organic waste from the businesses subject to this act, except as specified with regard to rural jurisdictions, thereby imposing a state-mandated local program by imposing new duties on local governmental agencies. The bill would require each jurisdiction to report to the department on its progress in implementing the organic waste recycling program, and the department would be required to review whether a jurisdiction is in compliance with this act.

This bill would authorize a local governmental agency to charge and collect a fee from an organic waste generator to recover the local governmental agency's costs incurred in complying with this act.

This bill would require the department to identify and recommend actions to address permitting and siting challenges and to encourage the continued viability of the state's organic waste processing and recycling infrastructure, in partnership with the California Environmental Protection Agency and other specified state and regional agencies. The bill also would require the department to cooperate with local jurisdictions and industry to provide assistance for increasing the feasibility of organic waste recycling and to identify certain state financing mechanisms and state funding incentives and post this information on its Internet Web site.



GENERAL NOTES

1. Trash enclosures shall be located in area accessible to trash vehicles. The numbers and locations shall be subject to Community Development Department review and approval.
2. The trash enclosures commercial and multi-family residential projects shall have overhead roof structures if drain is required and incorporate the following design features: architecturally integrated into the design of the project; separate ADA compliant pedestrian access; and large enough to accommodate two trash bins.

NOTE:
SEE SITE PLAN FOR
SIDEWALKS TO
TRASH ENCLOSURE

NOTE:
EDGE OF 6x6
P.T. POST EQ. TO
EDGE OF SLAB.

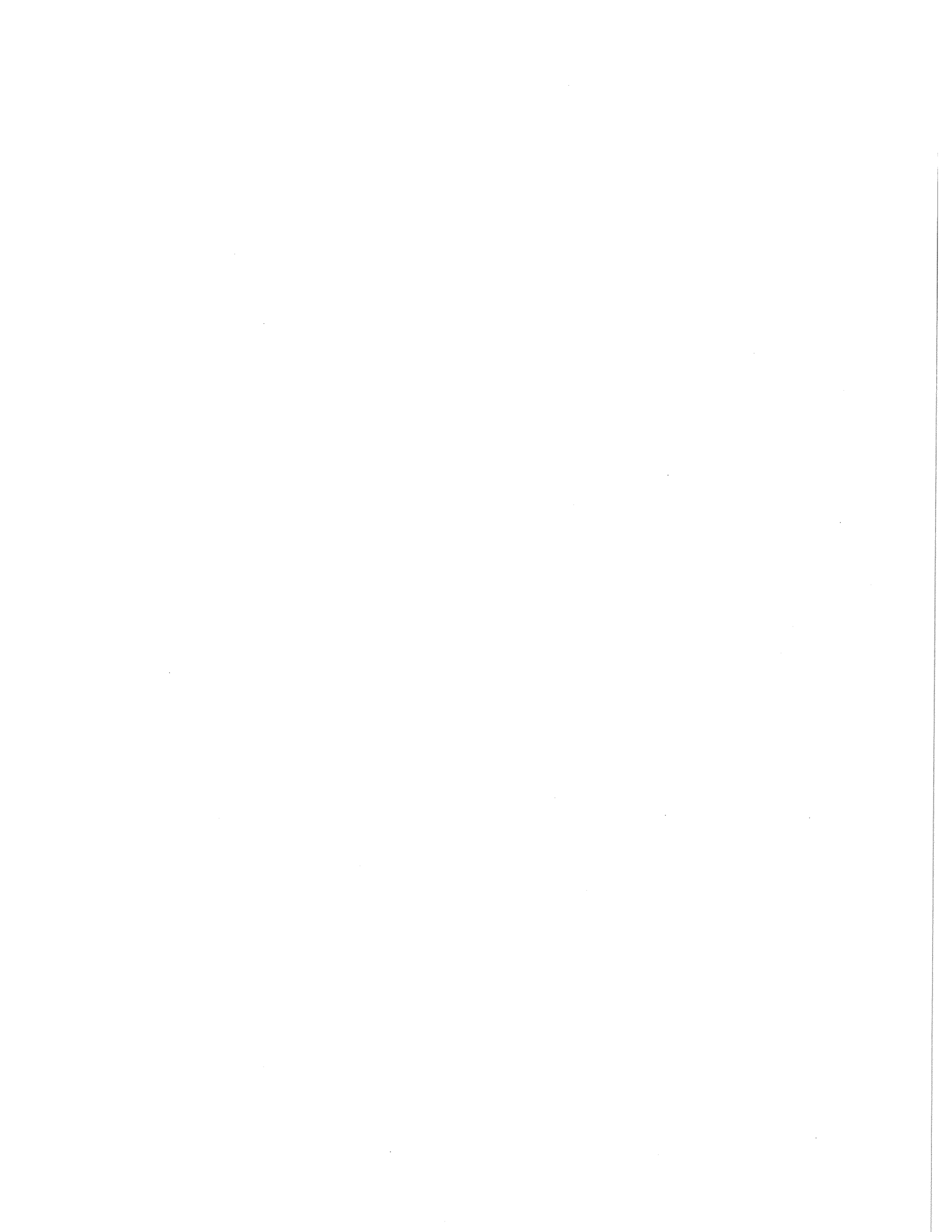
NOTE:
DOOR HARDWARE
TO CONFORM TO
ADA STANDARDS.

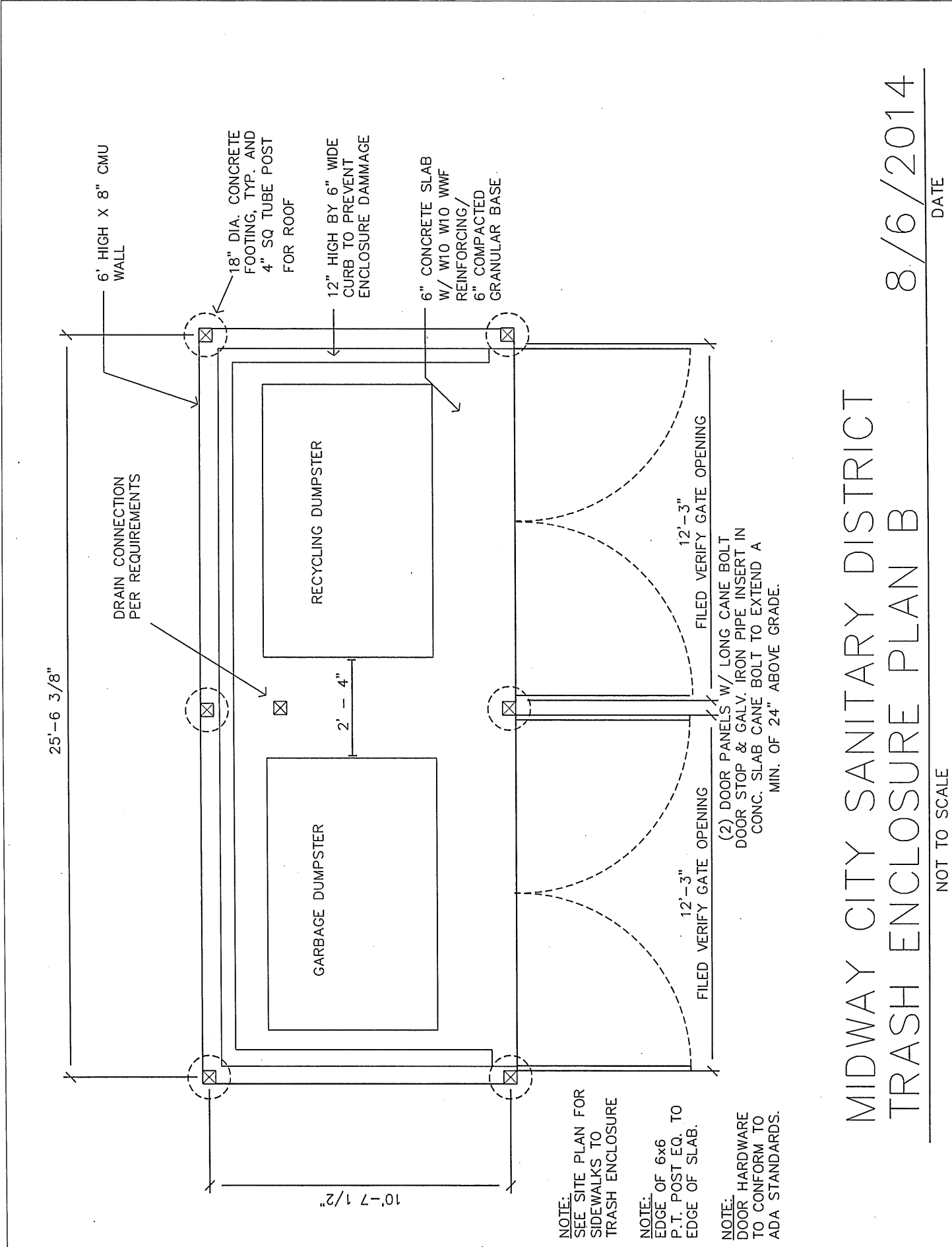
(2) DOOR PANELS W/ LONG CANE BOLT
DOOR STOP & GALV. IRON PIPE INSERT IN
CONC. SLAB BOLT TO EXTEND A
MIN. OF 24" ABOVE GRADE.

MIDWAY CITY SANITARY DISTRICT
TRASH ENCLOSURE PLAN A

8/6/2014
DATE

NOT TO SCALE





25'-6 3/8"

DRAIN CONNECTION PER REQUIREMENTS

18" DIA. CONCRETE FOOTING, TYP. AND 4" SQ TUBE POST FOR ROOF

12" HIGH BY 6" WIDE CURB TO PREVENT ENCLOSURE DAMAGE

6" CONCRETE SLAB W/ W10 WWF REINFORCING/ 6" COMPACTED GRANULAR BASE

GARBAGE DUMPSTER

RECYCLING DUMPSTER

10'-7 1/2"

2'-4"

12'-3"

FILED VERIFY GATE OPENING

12'-3"

FILED VERIFY GATE OPENING

(2) DOOR PANELS W/ LONG CANE BOLT DOOR STOP & GALV. IRON PIPE INSERT IN CONC. SLAB CANE BOLT TO EXTEND A MIN. OF 24" ABOVE GRADE.

NOTE: SEE SITE PLAN FOR SIDEWALKS TO TRASH ENCLOSURE

NOTE: EDGE OF 6x6 P.T. POST EQ. TO EDGE OF SLAB.

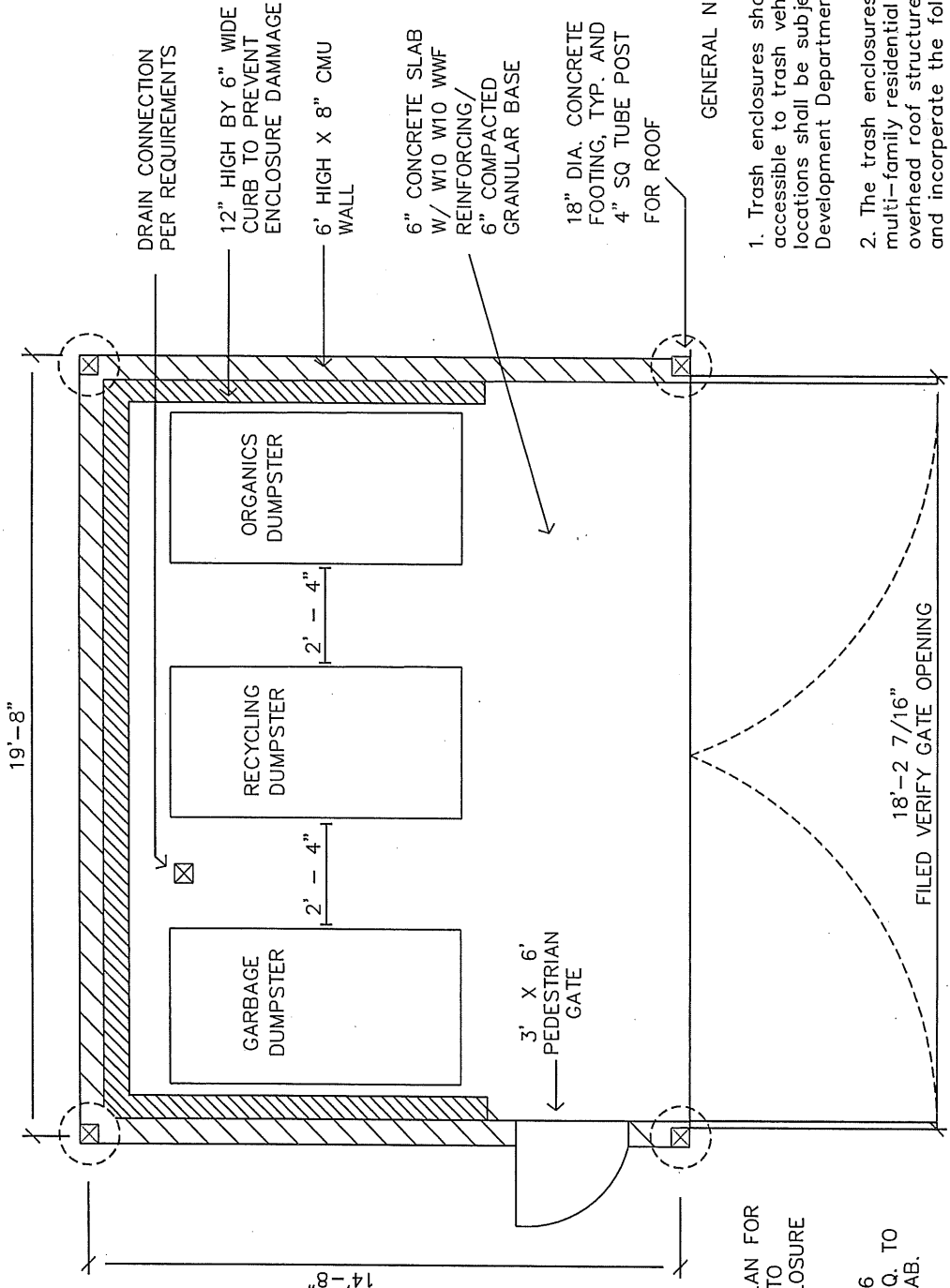
NOTE: DOOR HARDWARE TO CONFORM TO ADA STANDARDS.

MIDWAY CITY SANITARY DISTRICT TRASH ENCLOSURE PLAN B

8/6/2014

DATE

NOT TO SCALE



DRAIN CONNECTION PER REQUIREMENTS

12" HIGH BY 6" WIDE CURB TO PREVENT ENCLOSURE DAMAGE

6' HIGH X 8" CMU WALL

6" CONCRETE SLAB W/ W10 W10 WWF REINFORCING/ 6" COMPACTED GRANULAR BASE

18" DIA. CONCRETE FOOTING, TYP. AND 4" SQ TUBE POST FOR ROOF

GENERAL NOTES

1. Trash enclosures shall be located in area accessible to trash vehicles. The numbers and locations shall be subject to Community Development Department review and approval.
2. The trash enclosures commercial and multi-family residential projects shall have overhead roof structures if drain is required and incorporate the following design features: architecturally integrated into the design of the project; separate ADA compliant pedestrian access; and large enough to accommodate two trash bins.

NOTE: SEE SITE PLAN FOR SIDEWALKS TO TRASH ENCLOSURE

NOTE: EDGE OF 6x6 P.T. POST EQ. TO EDGE OF SLAB.

NOTE: DOOR HARDWARE TO CONFORM TO ADA STANDARDS.

(2) DOOR PANELS W/ LONG CANE BOLT DOOR STOP & GALV. IRON PIPE INSERT IN CONC. SLAB CANE BOLT TO EXTEND A MIN. OF 24" ABOVE GRADE.

18'-2 7/16" FILED VERIFY GATE OPENING

MIDWAY CITY SANITARY DISTRICT
TRASH ENCLOSURE PLAN C

8/26/2014

NOT TO SCALE

DATE

